

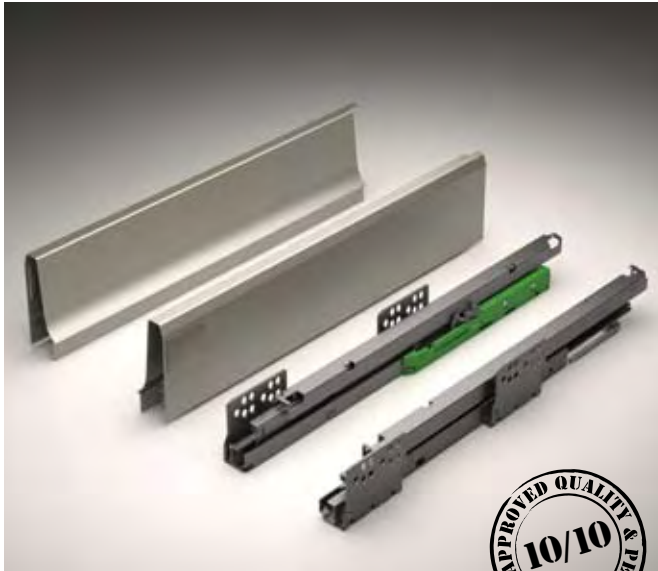
**Prime | Ten**



***Premium drawer  
for kitchen, bath  
& everywhere***

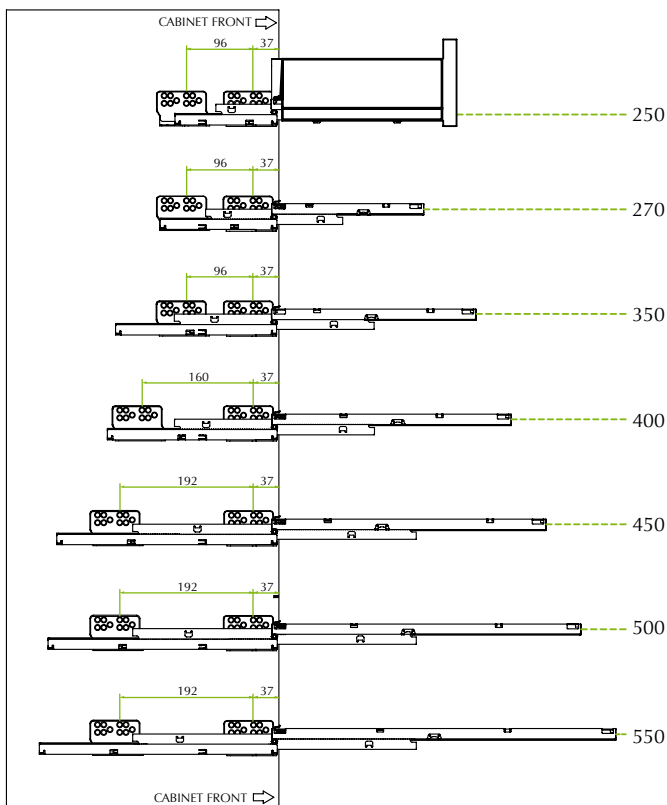
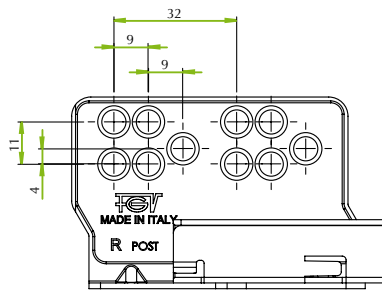


**FORMENTI &  
GIOVENZANA**



## Technology and design

Prime Ten is the new reference in terms of technology and design on double-wall drawers. Benefiting from the latest technological solutions in terms of production and performance, Ten turns every kitchen or bathroom into a space management machine. And with the new generation of SlowMotion damping, the comfort and quietness is at its best. The look and the cure of every detail of the appearance, like for example the reduced optical impact of the side cover cap, are giving this drawer a passport for a long future. Fully automatic assembly, flexible production set-up and great care for all ecological aspects turn Ten into the class winner in double-wall drawers.



## Full range and all accessories

Planned as a flexible system from the beginning on, Ten covers all dimensions from 250mm to 550mm to suit into bathroom, kitchen and elsewhere. Supplied in two standard colours Polar White and Silver Champagne, the system covers all necessary accessories to manage the space with a double-wall drawer. Easy-fix railing system with high back walls, side panels in steel and several other usual materials and separators of all kind to stabilise and organise the content of the drawer are evident. Cutlery trays in wood, plastic or steel help to put order as well as the waste bin system Netto. Every application is covered with Prime Ten.

### *Elegance and functionality*

Prime Ten has a timeless design which will not bore over time. Slim shape and perfect roundings confer a very elegant look. The drawer is powered by an all new full extension sliding system with a load capacity of 45kg throughout the range, with DualSynchro stabilisation for noiseless sliding and a most powerful stop close damper for perfect showroom effect and long lasting function. Self-adjusting in depth, the front fix technology allows OneStep 2-D adjustment via cams and a tool less assembly and disassembly of the front. Elegance and functionality at the highest level.



### *Space management at its best*

The very elegant railing system benefits from the new steel back design. Strong and elegant, it hosts an Easyfix fixation on the top corners. The front fixing of the railing itself is quick and intuitive to speed up assembly time in the factory. Separator bars in aluminium and elegant flaps are helping to manage the internal space of the Ten drawer system. Special solutions for undersink and for English drawers are obvious parts of the Ten programm.



### *A world of customisation*

Second born to DolceVita, the innerware® solution of FGV, Prime Ten benefits from its spirit of customisation. Starting with the elegant and easy to use steel side panel, the new DolceVita custom concept allows the use of an incredible material mix. Wood, aluminium, steel, glass are only a few. Especially the ArtLine concept using a new direct print technology on security glass is giving unexpected customisation possibilities. Art is entering into drawer design. And there is more to come.



- 1 Excellent design**  
Timeless shape, care of every detail and choice of materials and colours deliver a perfect object
- 2 State of the art technology**  
Full extension sliding system, stop-close damping technology and easy-fix assembly of all parts
- 3 Outstanding performance**  
High loading capacity throughout the range, extreme side stability and perfect gliding
- 4 Complete range**  
All required dimensions, full range of backs in different heights, easyfix railing system, English drawer
- 5 Large accessory program**  
Separator tubes, flap system, plate holder, cutlery trays, waste bin system, undersink solutions
- 6 Multiple supply system**  
Industrial supply in Boomerang trays, standard packing in 10, individual kit and personalised packs
- 7 Customisation**  
Steel side wall, material mix side panels, customised glass walls and no limit to creativity
- 8 Motorisation**  
Electro-mechanic OneTouch system E-Drive with dual triggering, backup and Nanny® children safety
- 9 Assembly machine**  
Automatic assembly machine for fast, secure and precise assembly of drawer components and bottom
- 10 Ecology**  
Low impact finishing system, recyclable Boomerang transport tray and use of ecological materials